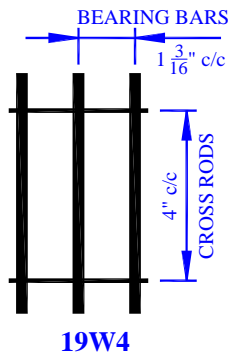
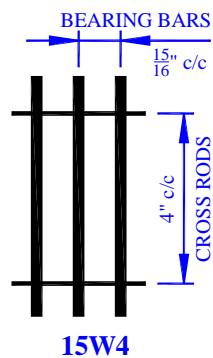
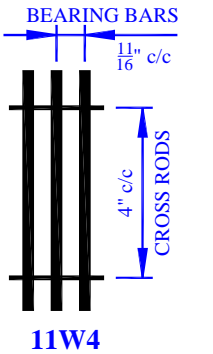




PACO CORPORATION

9945 S. Industrial Drive
Bridgeview, IL 60455
U.S.A.

Phone: (708) 430-2424
Fax: (708) 430-0056
sales@pacograting.com
www.PacoGrating.com



BEARING BARS – OUT TO OUT (In Inches)

Number of Bearing Bars	11W4		15W4		19W4	
	3/16"	3/16"	1/8"	3/16"	1/8"	
2	7/8	1 1/8	1 1/16	1 3/8	1 5/16	
3	1 9/16	2 1/16	2	2 9/16	2 1/2	
4	2 1/4	3	2 15/16	3 3/4	3 11/16	
5	2 15/16	3 15/16	3 7/8	4 15/16	4 7/8	
6	3 5/8	4 7/8	4 13/16	6 1/8	6 1/16	
7	4 5/16	5 13/16	5 3/4	7 5/16	7 1/4	
8	5	6 3/4	6 11/16	8 1/2	8 7/16	
9	5 11/16	7 11/16	7 5/8	9 11/16	9 5/8	
10	6 3/8	8 5/8	8 9/16	10 7/8	10 13/16	
11	7 1/16	9 9/16	9 1/2	12 1/16	12	
12	7 3/4	10 1/2	10 7/16	13 1/4	13 3/16	
13	8 7/16	11 7/16	11 3/8	14 7/16	14 3/8	
14	9 1/8	12 3/8	12 5/16	15 5/8	15 9/16	
15	9 13/16	13 5/16	13 1/4	16 13/16	16 3/4	
16	10 1/2	14 1/4	14 3/16	18	17 15/16	
17	11 3/16	15 3/16	15 1/8	19 3/16	19 1/8	
18	11 7/8	16 1/8	16 1/16	20 3/8	20 5/16	
19	12 9/16	17 1/16	17	21 9/16	21 1/2	
20	13 1/4	18	17 15/16	22 3/4	22 11/16	
21	13 15/16	18 15/16	18 7/8	23 15/16 *	23 7/8 *	
22	14 5/8	19 7/8	19 13/16	25 1/8	25 1/16	
23	15 5/16	20 13/16	20 3/4	26 5/16	26 1/4	
24	16	21 3/4	21 11/16	27 1/2	27 7/16	
25	16 11/16	22 11/16	22 5/8	28 11/16	28 5/8	
26	17 3/8	23 5/8 *	23 9/16 *	29 7/8	29 13/16	
27	18 1/16	24 9/16	24 1/2	31 1/16	31	
28	18 3/4	25 1/2	25 7/16	32 1/4	32 3/16	
29	19 7/16	26 7/16	26 3/8	33 7/16	33 3/8	
30	20 1/8	27 3/8	27 5/16	34 5/8	34 9/16	
31	20 13/16	28 5/16	28 1/4	35 13/16 *	35 3/4 *	
32	21 1/2	29 1/4	29 3/16			
33	22 3/16	30 3/16	30 1/8			
34	22 7/8	31 1/8	31 1/16			
35	23 9/16 *	32 1/16	32			
36	N/A	33	32 15/16			
37	N/A	33 15/16	33 7/8			
38	N/A	34 7/8	34 13/16			
39	N/A	35 13/16 *	35 3/4 *			

* Standard Panel Width Nominal 24" and 36"

GRATING WEIGHT (In Pounds Per Square Foot) CROSS ROD DIAMETER (In Inches)

Bearing Bars	11W4	11W2	15W4	15W2	19W4	19W2	Cross Rods
3/4 x 1/8	6.32	6.95	4.95	5.59	3.99	4.63	1/4
3/4 x 3/16	9.15	9.79	7.11	7.75	5.67	6.31	1/4
1 x 1/8	8.21	8.84	6.44	7.08	5.15	5.79	1/4
1 x 3/16	12.01	12.64	9.27	9.91	7.35	7.99	1/4
1 1/4 x 1/8	10.10	10.73	7.79	8.43	6.20	6.84	1/4
1 1/4 x 3/16	14.84	15.47	11.43	12.07	9.03	9.67	1/4
1 1/2 x 1/8	12.01	12.64	9.27	9.91	7.35	7.99	1/4
1 1/2 x 3/16	17.67	18.31	13.82	14.68	10.94	11.80	5/16
1 3/4 x 3/16	20.60	21.23	15.98	16.84	12.62	13.48	5/16
2 x 3/16	23.45	24.08	18.14	19.00	14.30	15.16	5/16
2 1/4 x 3/16	26.12	26.76	20.16	21.03	15.87	16.74	5/16
2 1/2 x 3/16	28.98	29.61	22.32	23.19	17.55	18.42	5/16