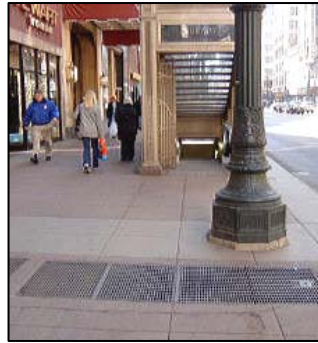




# PACO CORPORATION

9945 S. Industrial Drive  
 Bridgeview, IL 60455  
 U.S.A.

Phone: (708) 430-2424  
 Fax: (708) 430-0056  
 sales@pacograting.com  
 www.PacoGrating.com



## LOAD TABLE: 19W4 or 15W4 LIGHT DUTY



### MAXIMUM PEDESTRIAN SAFE SPAN



Bearing Bar Size	Grating weight lbs. per sq. ft.	Carbon Steel 19W4	Grating weight lbs. per sq. ft.	Stainless Steel 19W4	Grating weight lbs. per sq. ft.	Aluminum 19AP4	Grating weight lbs. per sq. ft.	Carbon Steel 15W4
3/4 x 1/8	3.99	3' - 6"	3.9	3' - 5"	N/A	N/A	N/A	N/A
3/4 x 3/16	5.67	3' - 10"	5.6	3' - 10"	N/A	N/A	7.11	4' - 1"
1 x 1/8	5.15	4' - 3"	5	4' - 3"	1.71	3' - 3"	6.44	4' - 7"
1 x 3/16	7.35	4' - 9"	7.2	4' - 8"	2.46	3' - 8"	9.27	5' - 0"
1 1/4 x 1/8	6.2	5' - 1"	6.1	5' - 0"	2.08	3' - 11"	7.79	5' - 5"
1 1/4 x 3/16	9.03	5' - 7"	8.9	5' - 7"	3.01	4' - 4"	11.43	5' - 11"
1 1/2 x 1/8	7.35	5' 10"	7.2	5' - 9"	2.46	4' - 5"	9.27	6' - 2"
1 1/2 x 3/16	10.94	6' - 5"	10.5	6' - 5"	3.56	4' - 11"	13.82	6' - 10"
1 3/4 x 3/16	12.62	7' - 3"	12.2	7' - 2"	4.12	5' - 6"	15.98	7' - 8"
2 x 3/16	14.3	8' - 0"	13.9	7' - 11"	4.68	6' - 1"	18.14	8' - 6"
2 1/4 x 3/16	15.87	8' - 9"	15.5	8' - 4"	5.24	6' - 8"	20.16	9' - 3"
2 1/2 x 3/16	17.55	9' - 5"	17.2	9' - 4"	5.79	7' - 3"	22.32	10' - 0"

This table load is provided for preliminary design computation only and not intended for any other purpose. Weight depends on panel width, cross bar selection, mill tolerance and manufacturing tolerance. Consult NAAMM for exact maximum load weights and specifications. When serrated grating is specified, the depth of the grating required for a specific load will be 1/4" greater than that shown in the load tables. Bearing bars 19/16" or 15/16" on center with cross rods 4" on center.