

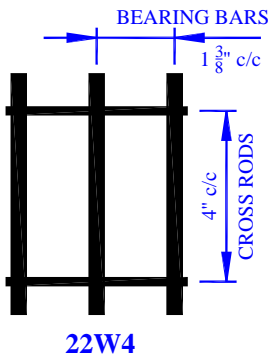
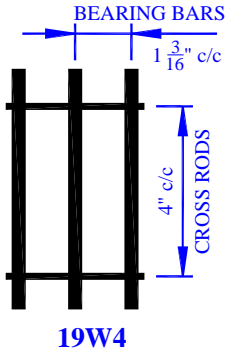


PACO CORPORATION

9945 S. Industrial Drive
Bridgeview, IL 60455
U.S.A.

Phone: (708) 430-2424
Fax: (708) 430-0056
sales@pacograting.com
www.PacoGrating.com

BEARING BARS – OUT TO OUT (In Inches)



Number of Bearing Bars	19W4	22W4
	1/4"	3/8"
2	1 7/16	1 3/4
3	2 5/8	3 1/8
4	3 13/16	4 1/2
5	5	5 7/8
6	6 3/16	7 1/4
7	7 3/8	8 5/8
8	8 9/16	10
9	9 3/4	11 3/8
10	10 15/16	12 3/4
11	12 1/8	14 1/8
12	13 5/16	15 1/2
13	14 1/2	16 7/8
14	15 11/16	18 1/4
15	16 7/8	19 5/8
16	18 1/16	21
17	19 1/4	22 3/8
18	20 7/16	23 3/4 *
19	21 5/8	
20	22 13/16	
21	24 *	
22	25 3/16	
23	26 3/8	
24	27 9/16	
25	28 3/4	
26	29 15/16	
27	31 1/8	
28	32 5/16	
29	33 1/2	* Standard Panel Width Nominal 24" and 36"
30	34 11/16	
31	35 7/8 *	

GRATING WEIGHT (In Pounds Per Square Foot) CROSS ROD DIAMETER (In Inches)

Bearing Bars	19W4	Cross Rods
1 x 1/4	9.9	5/16
1 1/4 x 1/4	12.1	5/16
1 1/2 x 1/4	14.3	5/16
1 3/4 x 1/4	16.5	3/8
2 x 1/4	18.7	3/8
2 1/4 x 1/4	20.9	3/8
2 1/2 x 1/4	23.1	3/8
3 x 1/4	27.5	7/16
4 x 1/4	36.3	7/16

Bearing Bars	22W4	Cross Rods
1 x 3/8	14	5/16
1 1/4 x 3/8	15.5	5/16
1 1/2 x 3/8	19.2	5/16
1 3/4 x 3/8	22.1	3/8
2 x 3/8	24.9	3/8
2 1/4 x 3/8	27.8	3/8
2 1/2 x 3/8	30.7	3/8
3 x 3/8	36.9	7/16
4 x 3/8	47.9	7/16